

Spring Rock Park Summer Parking Plan

We want to address the recent influx of calls we've received regarding the parking situation at Spring Rock Park, particularly concerning the upcoming Pickleball construction. Rest assured, we are actively working on a response plan to tackle these concerns swiftly and effectively. I've outlined below some key measures we are implementing to manage the parking situation during the construction period:

1. **Parking Attendants:** We will have parking attendants on-site four days a week, from 4-6 PM, to assist with traffic flow and parking management.
2. **Expanded Parking Zone:** A large parking zone map will be created to accommodate up to 88 additional parking spaces, helping alleviate congestion that attendants will use to direct parking.
3. **Immediate Actions:** We will promptly paint the employee lot and review the construction fence layout and traffic control plan with the contractor to optimize parking availability and traffic flow.
4. **Temporary Parking Areas:** Temporary parking areas will be designated at Waldo Erickson and the Concession area to provide additional parking options.
5. **Communication:** We are developing a comprehensive Q&A for social media and website posting to address common inquiries and keep everyone informed.

While we anticipate construction to commence on or before June 1, 2024, we are actively working with the contractor to potentially delay the start date until June 15, 2024. It's essential to balance the need to mitigate traffic and parking issues with the contractor's schedule to avoid potential cost escalations.

In terms of parking attendants, Barb, Martin, Dennis, and I have volunteered our assistance, but we welcome additional volunteers from the community. If you're available from 4-6 PM, Monday to Thursday, your help would be greatly appreciated. We will also supplement our efforts with part-time employees, and we hope WSL and AYSO will consider volunteering as well.

It's important to acknowledge that ingress and egress congestion have been an ongoing challenge at Spring Rock Park, particularly during peak times. However, I want to remind everyone of our commitment to improvement. When we demolished the tennis courts to accommodate the Tollway expansion, it was always our plan to replace them with Pickleball Courts, effectively adding more recreational opportunities. We allowed temporary parking at this sight until we sufficiently funded the PB plan (over \$800,000 in donations by our PB community). At the same time planning to add more parking, and as of this writing, we have added over 88 additional parking spaces to accommodate this growth (the new underpass opens a whole new world of parking, bicycle & pedestrian access to the park). While I understand that these additional spaces may not be as convenient however they offer the important benefits of ensuring the safety of our children and minimizing exposure to poisonous vehicle emissions. Additionally, senior up-close parking will be available to accommodate those with mobility concerns.

Finally, please find attached our 'Bike to Park' campaign, which we will deploy on social media in alignment with the construction timetable. Maybe WSL & AYSO can take the challenge!

I will continue to keep you updated on any developments. Thank you for your patience and cooperation during this period of transition.



ROTARY PICKLEBALL CENTER Q&A

- 1. When will the construction of the pickleball center begin? Early June 2024**
- 2. When will the pickleball center be completed? Late August 2024**
- 3. How many courts will there be? Eight, each set of 2 courts separated from others with fencing.**
- 4. Will there be lights? Yes**
- 5. Will the courts be designated for beginner/advanced? They will be structured by skill levels.**
- 6. Will there be bathrooms near the courts? Yes**
- 7. What time will the courts open and close Open at dawn, and close at 10 PM**
- 8. Can you reserve a court, and will there be a fee to do so? Yes, some courts can be reserved and there will not be a fee for Western Springs residents.**
- 9. How do you reserve a court? Through the Western Springs Park District website Parks tab**
- 10. What other amenities will be available? There will be a pathway between the courts and shade structures designed for comfort for the pickleball community as well as vending machines and water fountains**

Bike To The Parks & Limit Parking Congestion





Ready to Make a Real Difference in the Quality of Life in Western Springs?

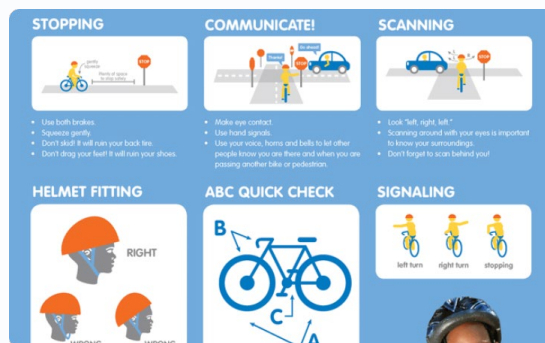
Ready To Be a Role Model for a Healthy Lifestyle?



- Join the Movement to Reduce Pollution and Promote Sustainability!
- Get in the Best Shape of Your Life!
- Park Your Car and Ride Your Bike to the Amazing Parks of Western Springs!
- Embrace Outdoor Fun - Walk, Run, and Ride to the Greatest 13 Parks in the Western Suburbs!

Save Our Parks & Roads, Strengthen Our Community, and Transform Your Life!

Bicycle Safety Training Classes



Learn How to Ride Safely

Join our bicycle safety training classes sponsored by the Western Springs Park District this summer. Gain valuable knowledge and skills for safe riding. Our expert instructors will guide you through essential techniques and best practices.

Wednesday, June 5th at 6 PM Upper Parking Lot, Spring Rock Park